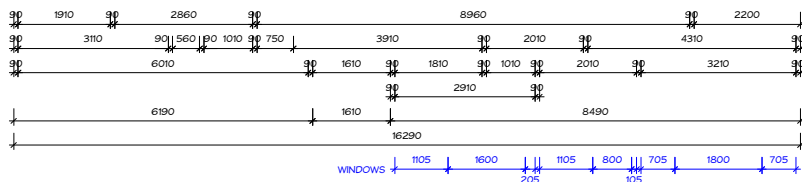
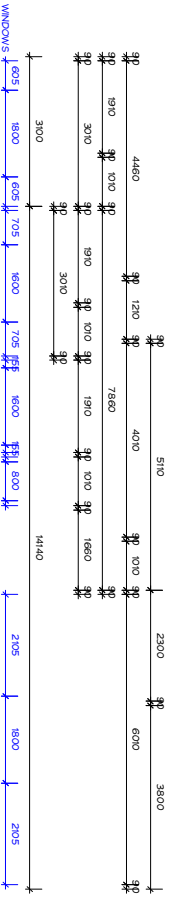
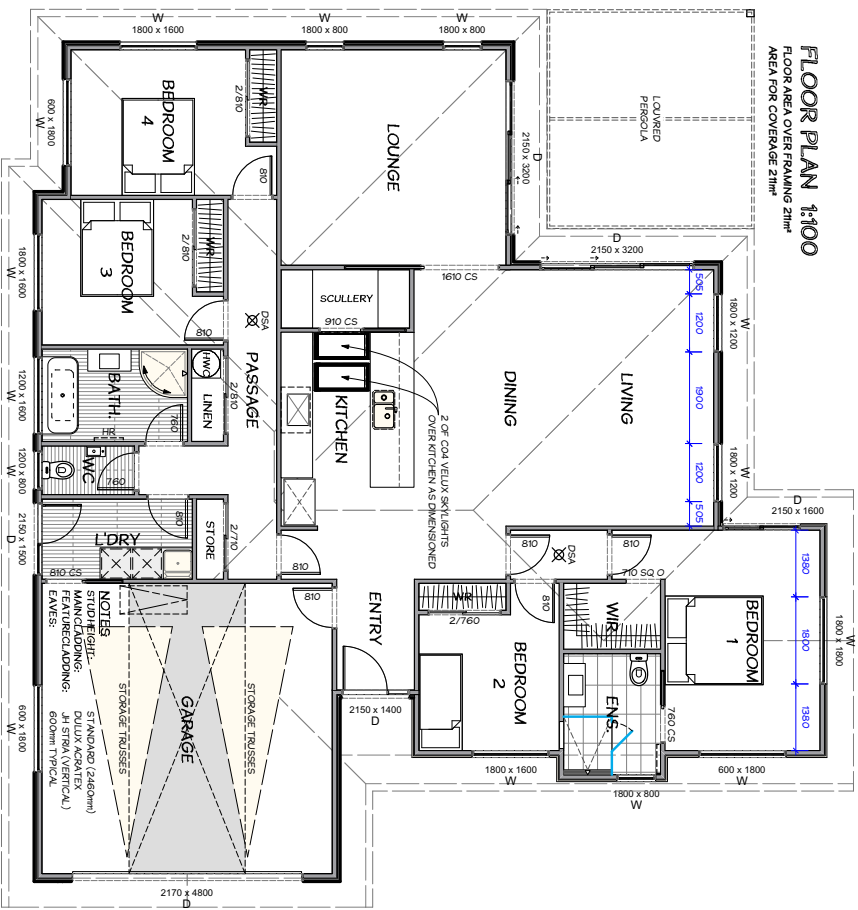


FLOOR PLAN 1:100
FLOOR AREA COVERING 211m²
AREA FOR COVERAGE 211m²



NOTES

- TIMBER FRAMING**
- ALL EXTERNAL WALL FRAMING SHALL BE 90x45mm DOUGLAS FIR MS68 H12 KD @ 600mm CRS. DIVANES @ 800mm CRS UNLESS OTHERWISE STATED. ALL INTERNAL WALL FRAMING SHALL BE 90x45mm DOUGLAS FIR MS68 H12 KD @ 600mm CRS. DIVANES @ 800mm CRS.
- ALL OTHER FRAMING TIMBER (INCLUDING FLOOR ROOF, DECK ETC.) SHALL HAVE A MINIMUM GRADE OF MS68/568 UNLESS OTHERWISE STATED
- HOT WATER CYLINDER**
- 250 LITRE PRESSURE SOLAR READY ELECTRIC HOT WATER CYLINDER PER ETC. PRESSURE REDUCING & RELIEF VALVES & TEMPERING VALVE 250 COPPER SLIDE PIPE TO DISCHARGE OVER THE NEAREST GULLY TRAP SECURE WITH SEISMIC RESTRAINTS AS PER ACCEPTABLE SOLUTION G2/AS1 (WATER SUPPLIES) FIGURE 14.
- STORAGE WATER HEATERS SHALL HAVE A SAFE TRAY. THE SAFE TRAY SHALL INCORPORATE A DRAIN WITH A MINIMUM DIAMETER OF 40mm. WHERE THE TANK OVERFLOW DISCHARGES INTO THE SAFE TRAY, THE DIAMETER OF THE SAFE TRAY DRAIN SHALL BE GREATER THAN THE OVERFLOW PIPE FROM THE TANK
- LINTELS**
- ALL LINTELS AND BEAMS TO BE S68 H12 UNLESS OTHERWISE SHOWN
- FOR PREVENTION OF UPLIFT REFER TO WATER LINE LAYOUT AND THE FINISH SCHEDULE FOR LINTEL FINING TYPE DEFINITIONS
- ALL LINTELS AND BEAMS TO BE DESIGNED IN ACCORDANCE WITH ROOF TRUSS DESIGN MANUFACTURER
- UNTEL DESIGN CERTIFICATE AND TRUSS DESIGN CERTIFICATED TO BE PROVIDED PRIOR TO MANUFACTURE
- WET AREAS WALL LININGS**
- WET AREAS WALL LININGS FINISHED WITH SEMI-GLOSS OR GLOSS PAINT AS PER ACCEPTABLE SOLUTION E3/AS1 3.12 WALLS (1)
- BATH TO HAVE 150mm HIGH CERAMIC OR STONE TILE SURROUND HAVING 6% MAXIMUM WATER ABSORPTION, WATERPROOF-GROUTED JOINTS, AND BEDDED WITH AN ADHESIVE SPECIFIED BY THE TILE MANUFACTURER AS BEING SUITABLE FOR THE TILES SUBSTRATE MATERIAL AND THE ENVIRONMENT OF USE.
- NZBC FOOD PREPARATION PREVENTION OF CONTAMINATION:**
- 1.1.3 PREPARATION SURFACES**
- FOOD PREPARATION SURFACES SHALL BE EASILY MAINTAINED WITH AN APPROPRIATE STAIN RESISTANT TILES ARE EXAMPLES OF SUITABLE MATERIALS FOR THESE SURFACES.
- 1.6 WALL LININGS**
- WALL LININGS ADJACENT TO APPLIANCES AND FACILITIES SHALL HAVE SURFACES THAT CAN BE EASILY MAINTAINED IN A HYGIENIC CONDITION. STAINLESS STEEL, DECORATIVE HIGH PRESSURE LAMINATE, TILES, WALLBOARDS WITH PAINTED OR APPLIED IMPERVIOUS COATINGS OR FILMS ARE EXAMPLES OF SUITABLE MATERIALS FOR THESE SURFACES.
- RECESSED DOWNLIGHTS**
- ALL RECESSED DOWNLIGHTS TO BE IC RATED
- ALL ACCESSWAYS TO ACHIEVE A MINIMUM OF 2000 X 1 FLOOR LEVEL IN COMPLIANCE WITH NZBC ACCEPTABLE SOLUTION G8/AS1.

LEGEND

- DOMESTIC SMOKE ALARM COMPLYING WITH ANY OF THE FOLLOWING STANDARDS, UL217, UIC-5531, AS3786 OR BS5446 - PART 1
- EXTRACTOR FAN CONNECTED TO LIGHT SWITCH DUCT THROUGH ROOF SPACE FAN TO EXTERIOR. MIN FLOW RATE 25L / SEC
- TYPE F = LINTEL FINING TYPE
- Z17A0KAS = LINTEL SIZE
- Z150KAS00 = OPENINGSIZE (H x W)

INTERNAL MOISTURE

FLOOR COVERINGS TO COMPLY WITH NZBC E3 - INTERNAL MOISTURE, SECTION 3.0 WATERPROOFING CLAUSE 3.11 FLOORS - THE REQUIREMENT FOR IMPERVIOUS AND EASILY CLEANED FLOOR SURFACES APPLIES TO SPACES SUCH AS KITCHENS, BATHROOMS, LAUNDRIES AND TOILET FACILITIES

NOTES

ALL DIMENSIONS ARE TO FRAMING UNLESS OTHERWISE STATED.

THE CONTRACTOR SHALL VERIFY ALL DIMENSIONS, LEVELS AND DETAILS SHALL BE IMMEDIATELY NOTIFIED OF ANY AMBIGUITY, OMISSION OR DISCREPANCY DETAILED OR IMPLIED BY THE CONTRACT DOCUMENTS

tel: 03 544 9499
fax: 03 544 9488
www.gowanswalters.com

Gowans Walters & Associates Ltd
building designers

project
FOUR BEDROOM RESIDENCE
at: **26 ARA O TAMA ARIKI, STOKE**
for: **EJB HOMES & GREEN BAY INVESTMENTS**

Home by **ORANGE**

rev date details

scale(s) at A3
1:100

sheet title
FLOOR PLAN

sheet
04 of 10c

drawn JN
date 21.05.2021
job no. 21186